

---

# Initiation and early development of the 2008 April 26 CME

---

J. Huang

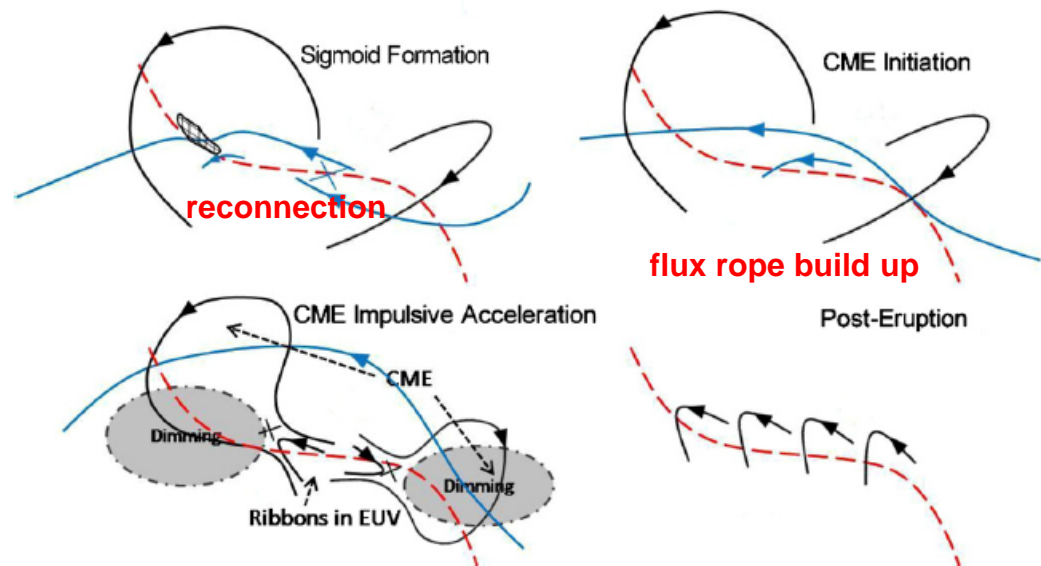
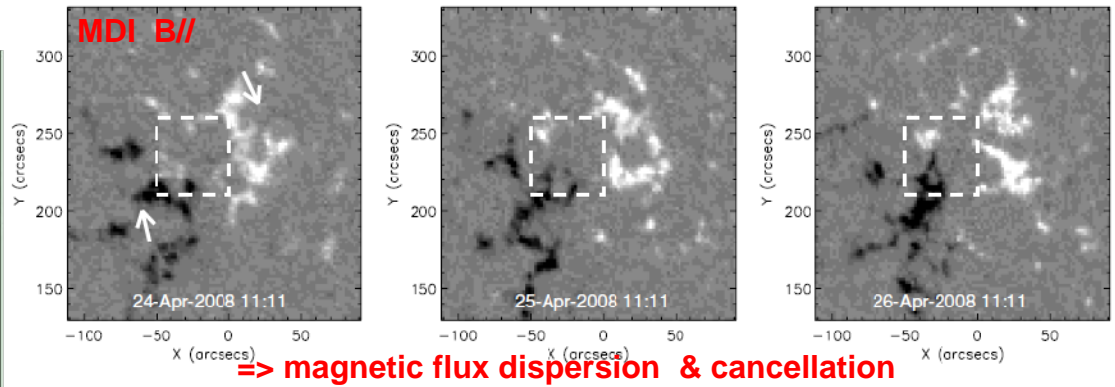
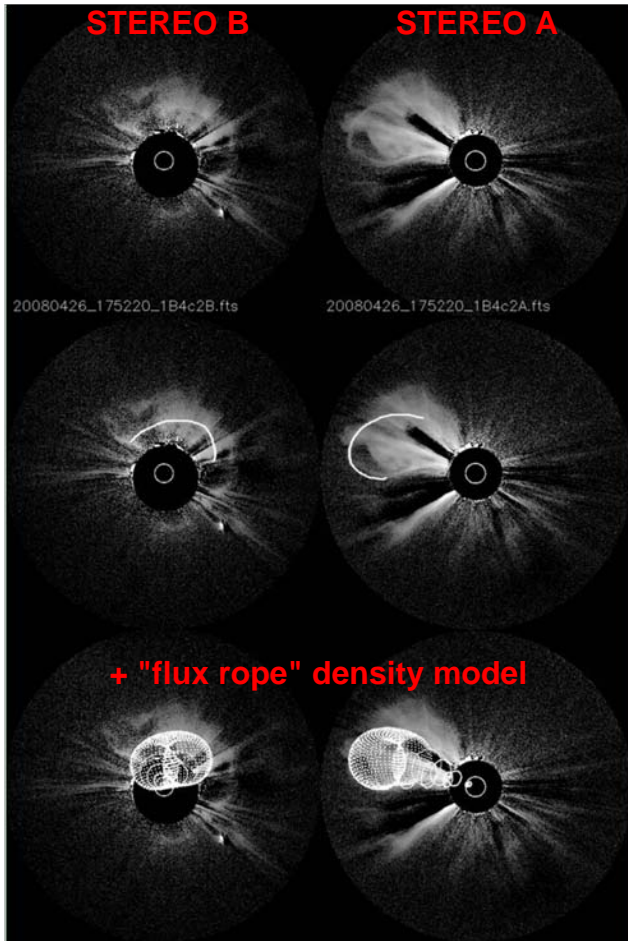
National Astronomical Observatories, CAS, Beijing, China

P. Démoulin, M. Pick

LESIA, Observatoire de Paris, Meudon, France

# Introduction:

2008 April 26 event



(Thernisien et al. 2009, Wood et al. 2009)

(Cheng et al. 2010)

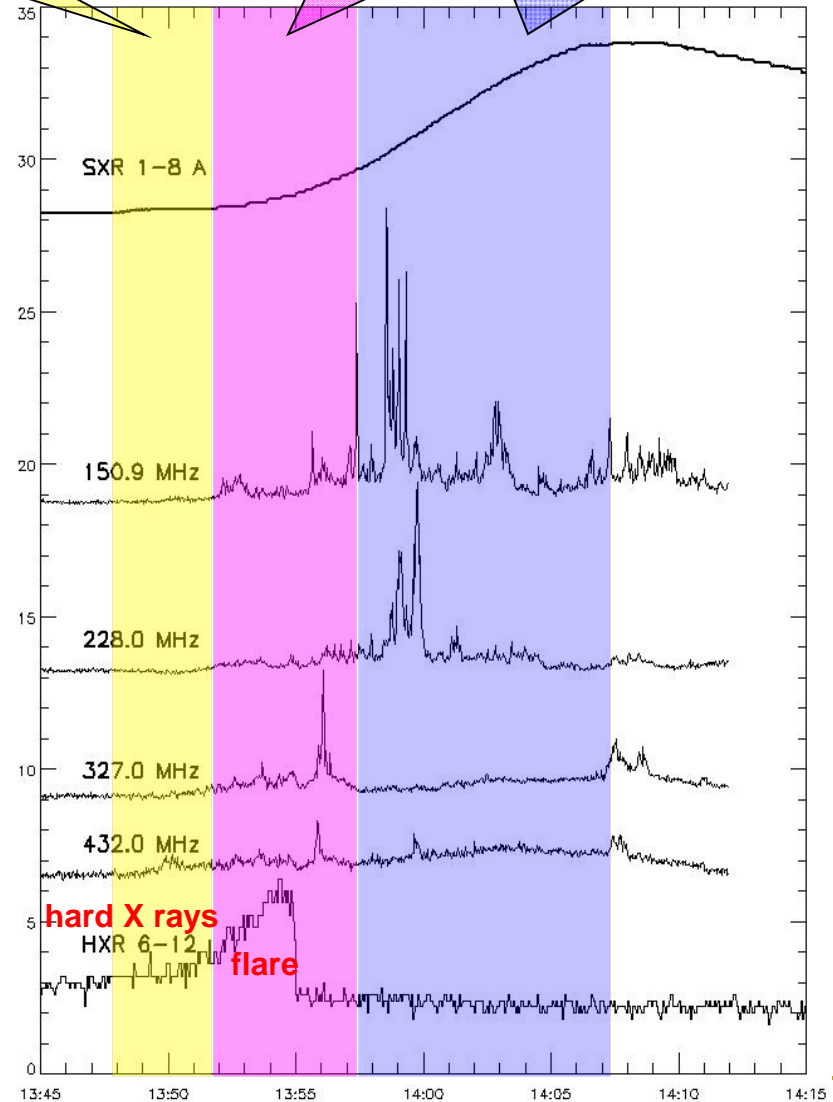
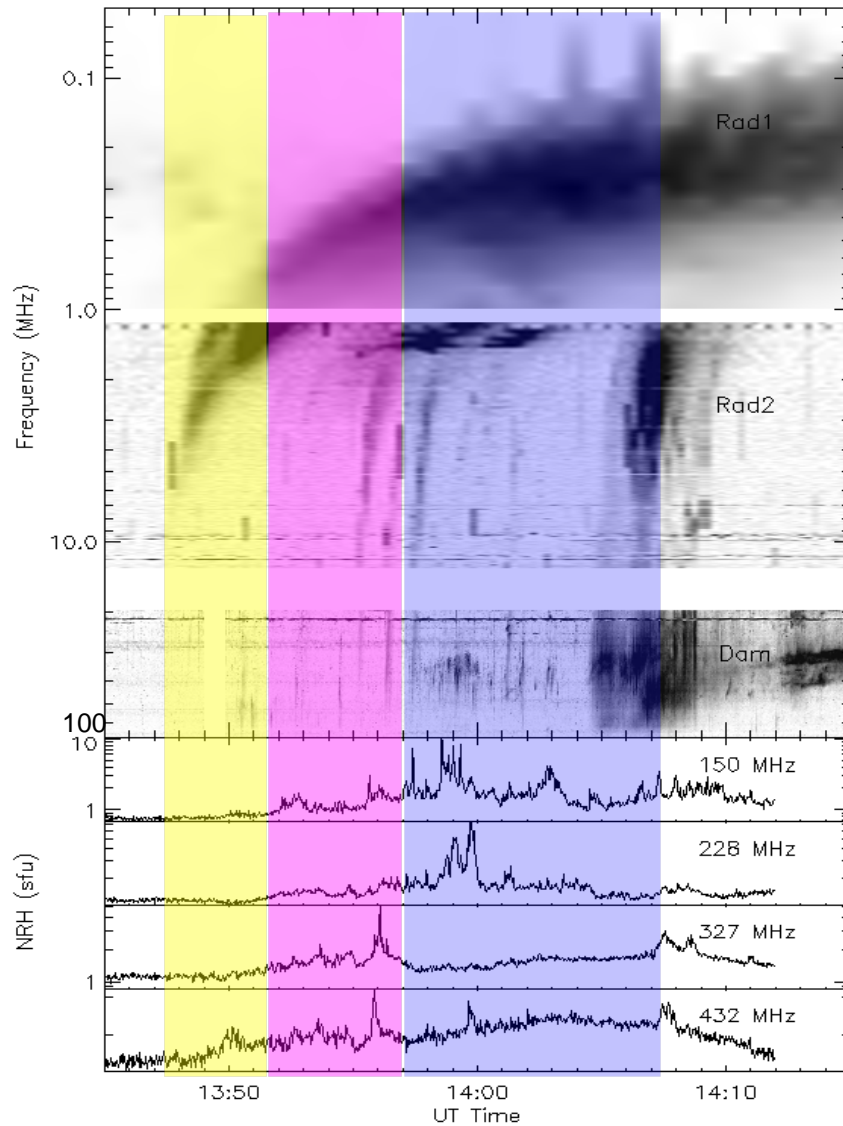
# The radio burst:

26 APR 2008

Initiation

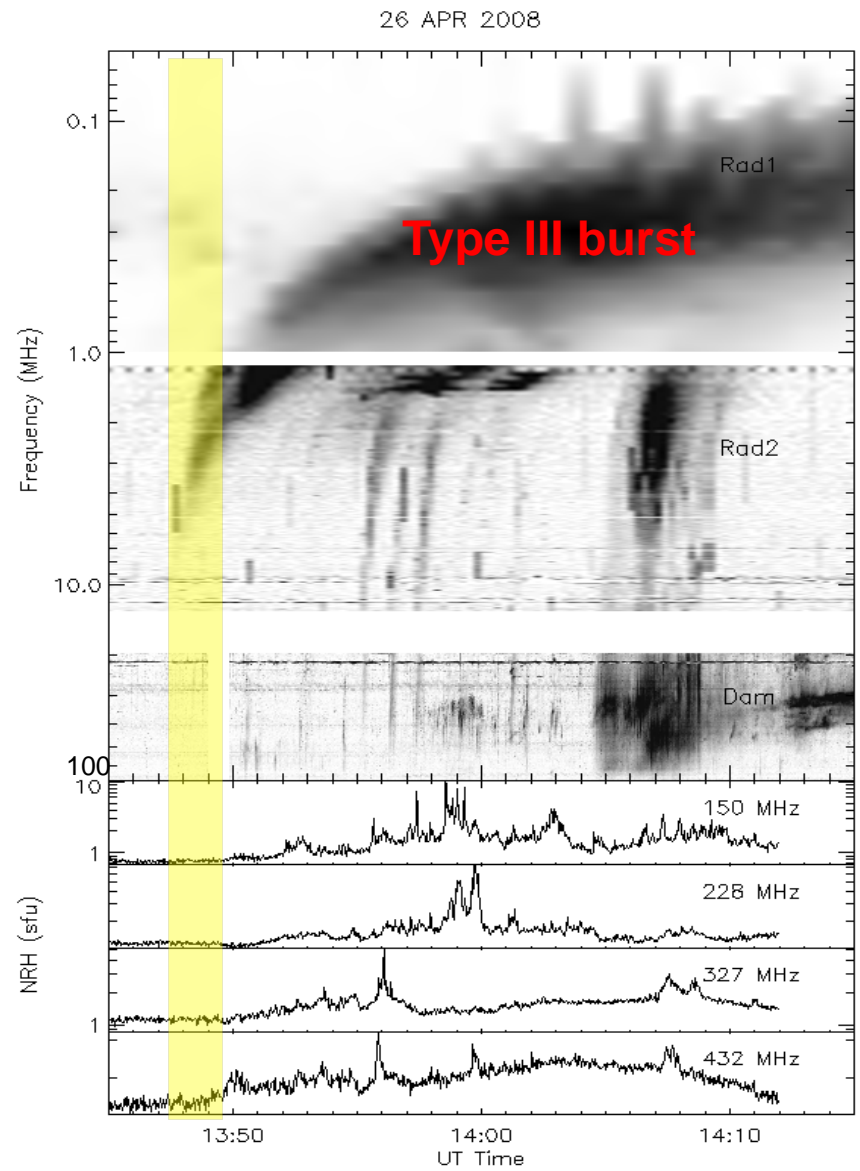
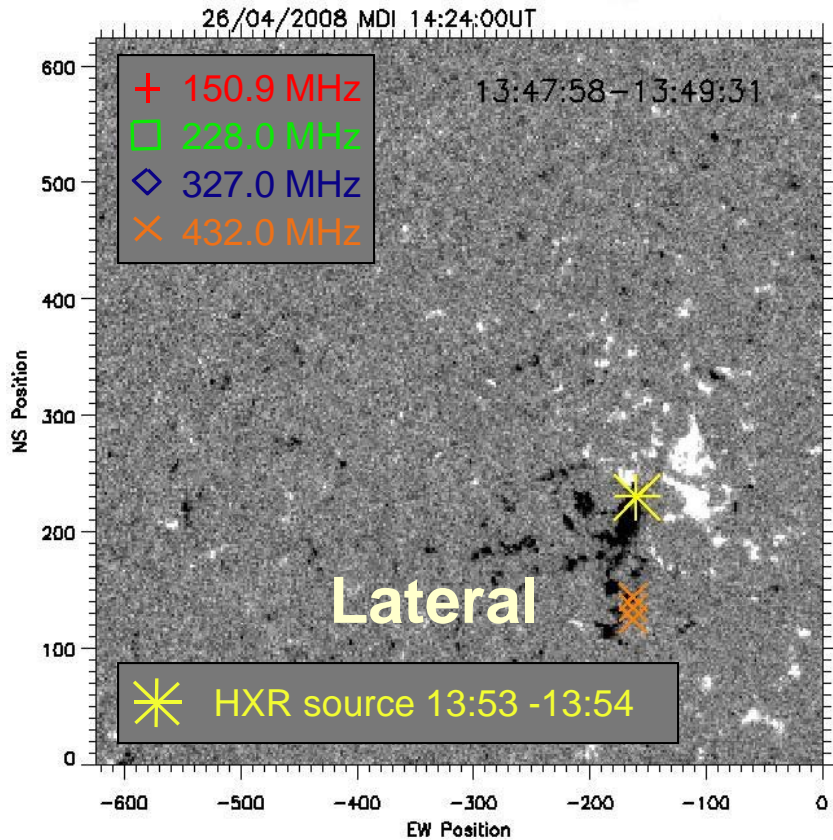
Eruptive phase I

Eruptive phase II

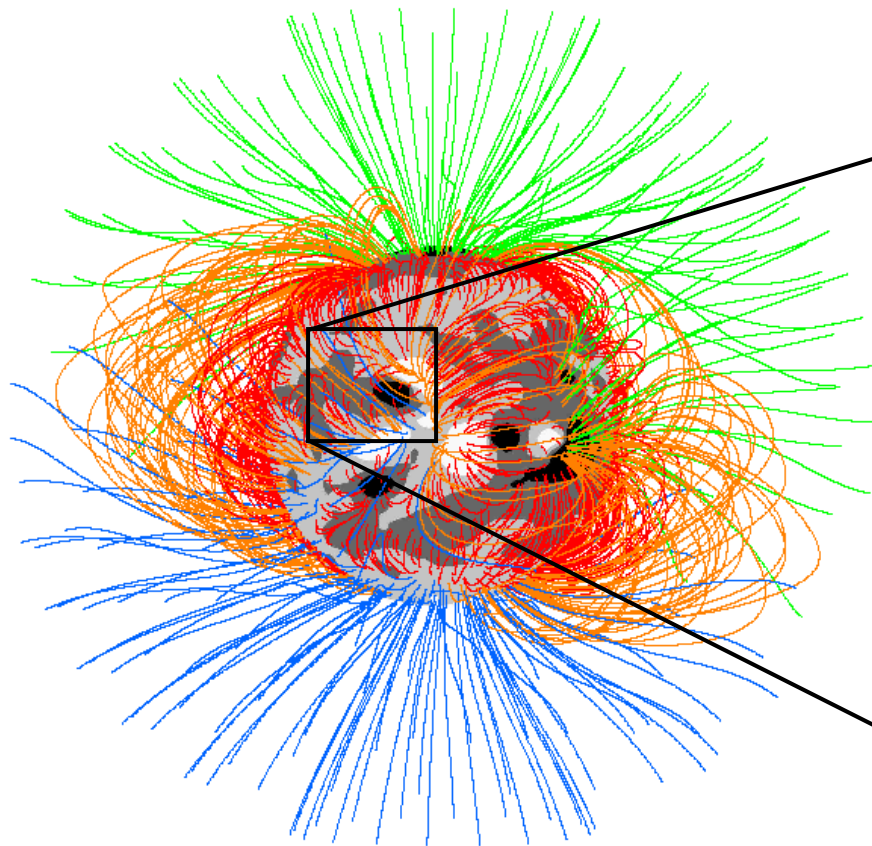


# Initiation I:

■ 13:47:58-13:49:31

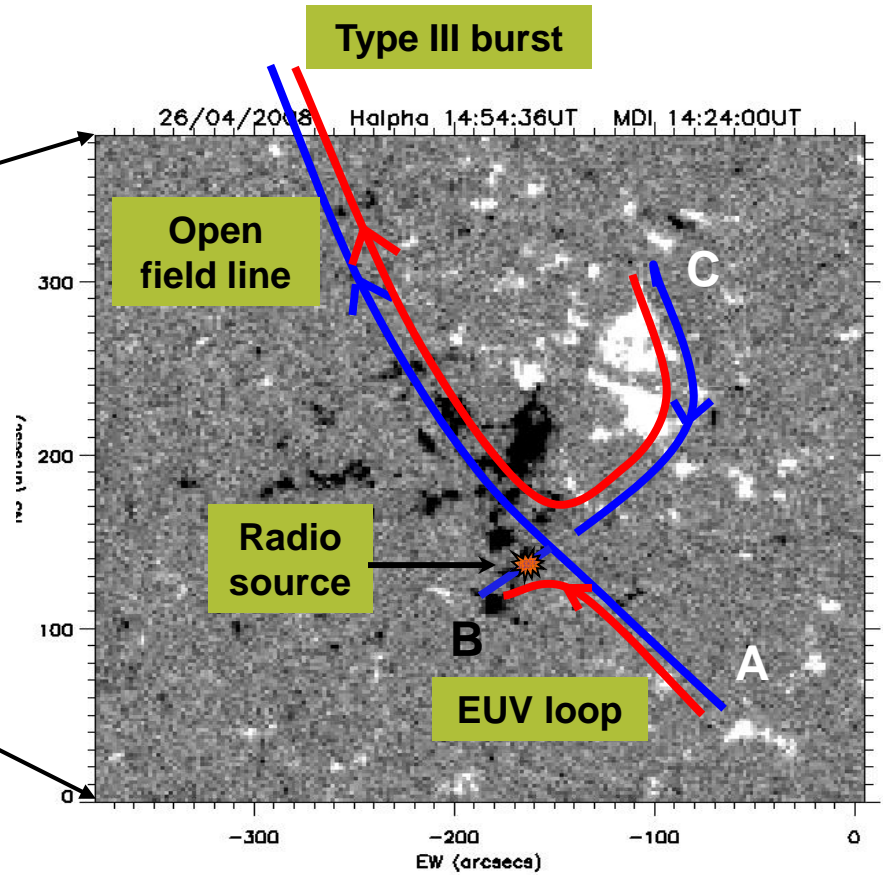






2008 APRIL 26 (MWO 2069/225.90)

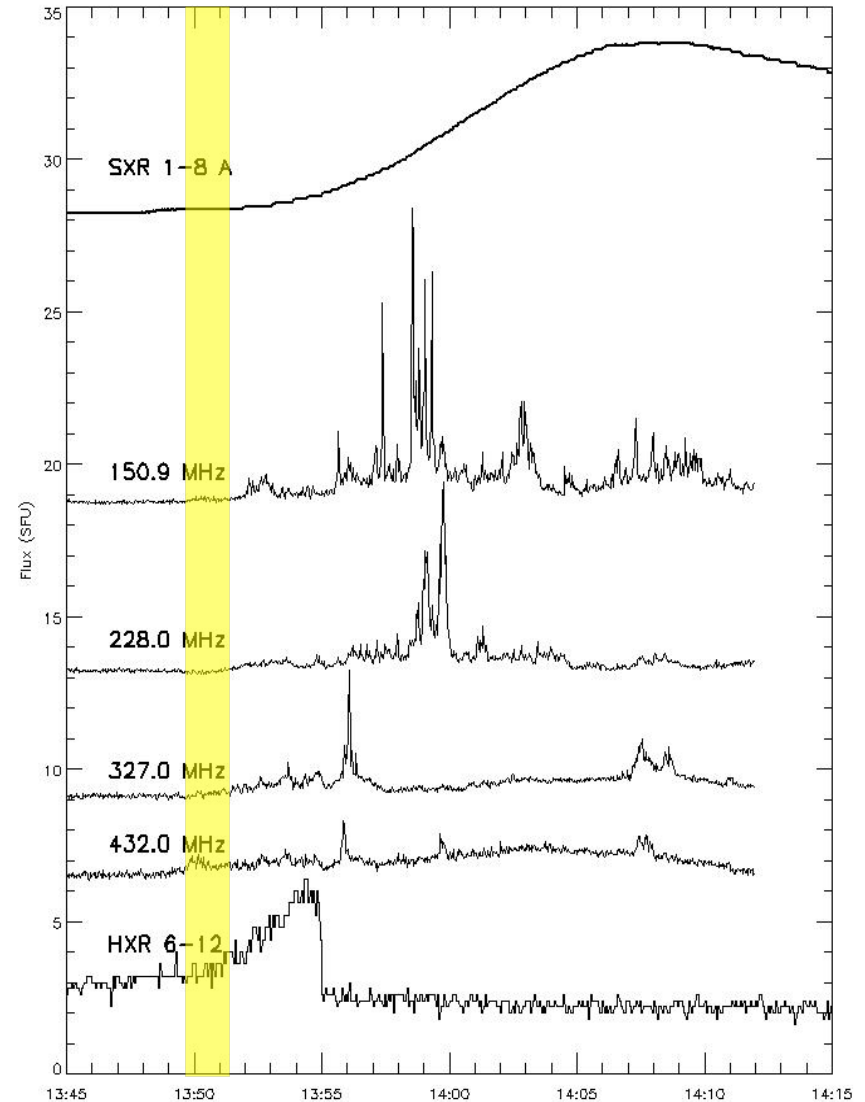
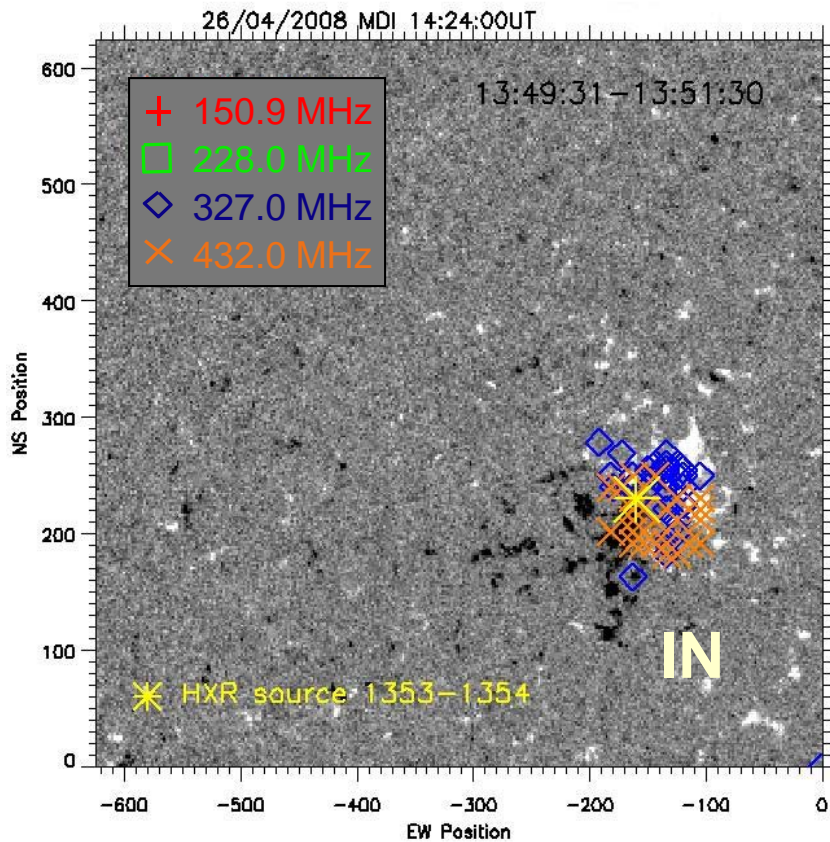
Yiming Wang

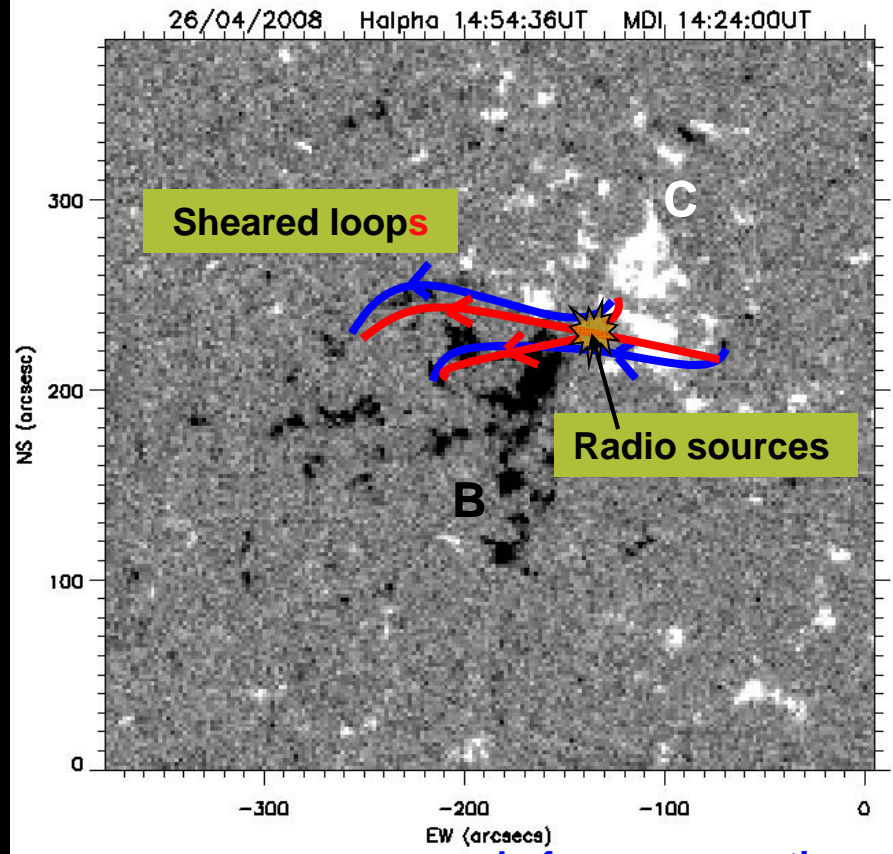
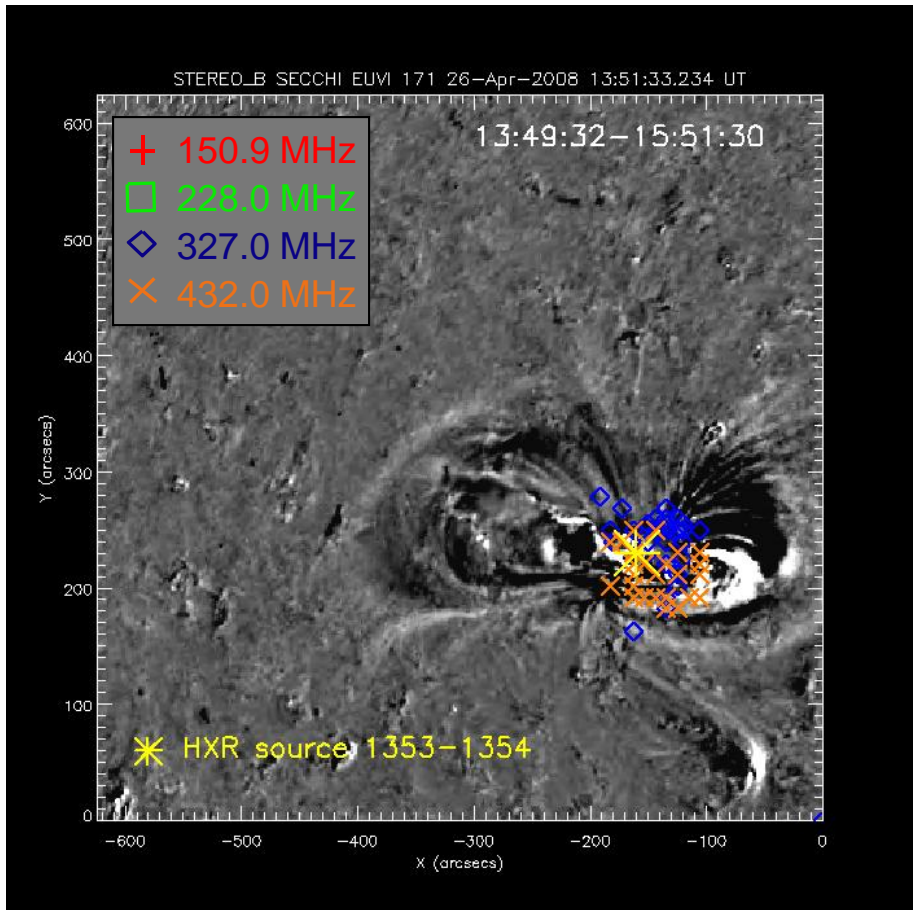


before reconnection  
after "

# Initiation II:

■ 13:49:31-13:51:30



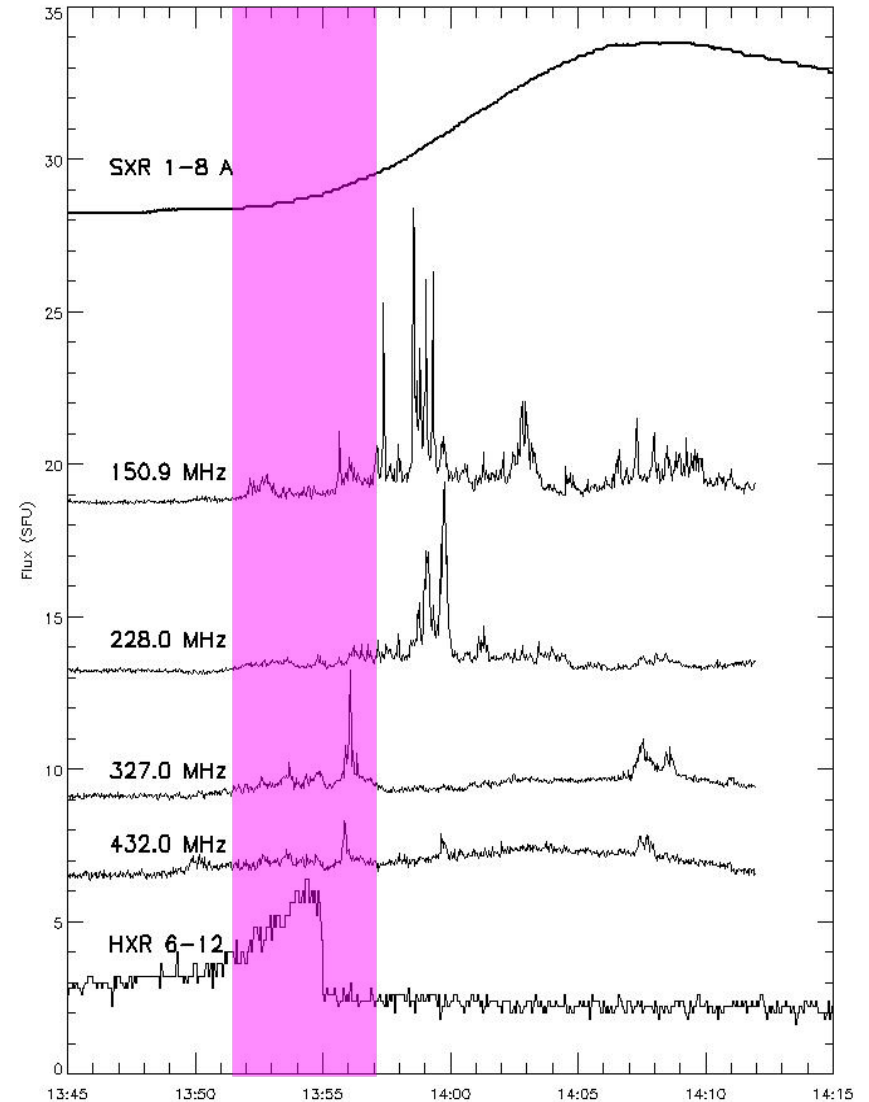
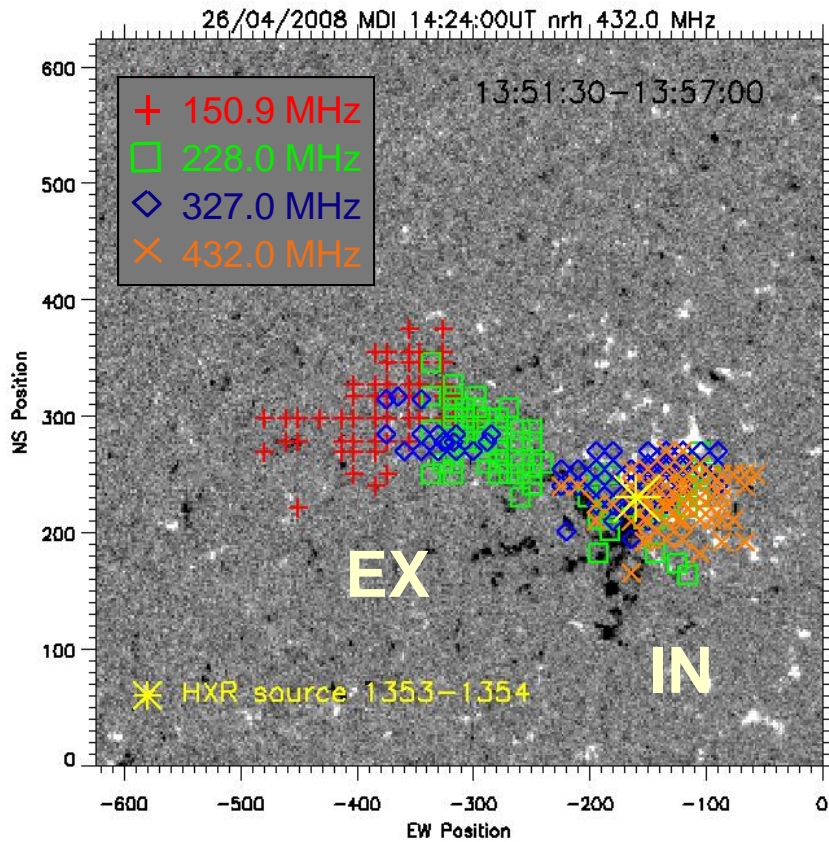


before reconnection  
after reconnection



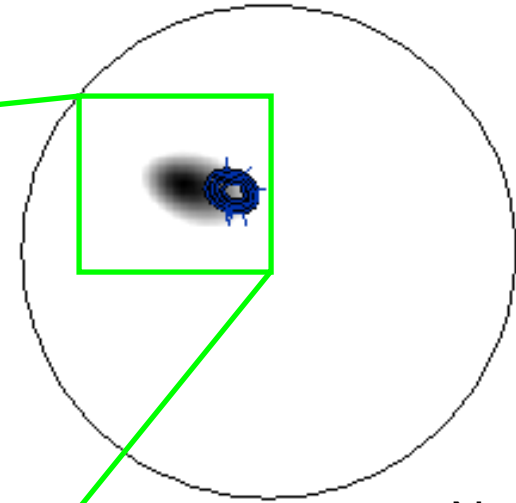
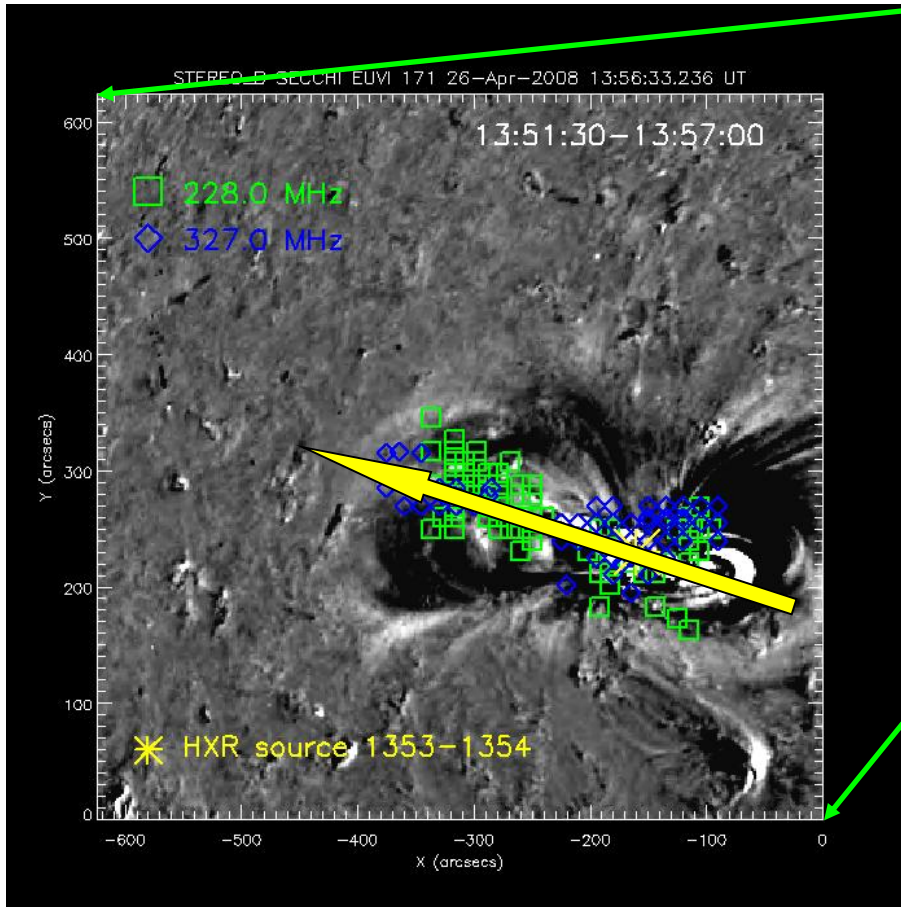
# Eruptive phase I:

■ 13:51:30-13:57:00

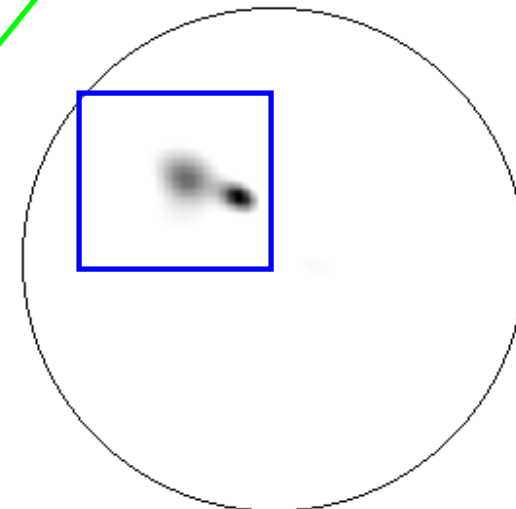




228 MHz 13:55:36 13:55:42



Nancay

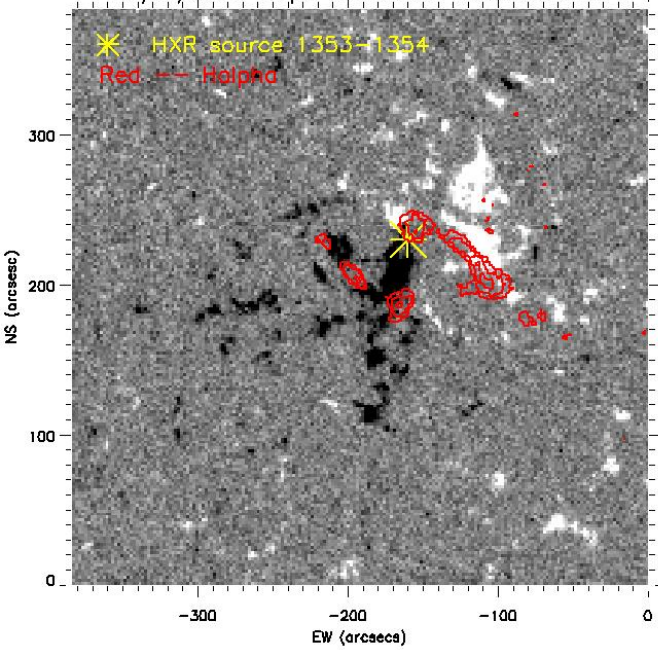


The double sources and dimmings indicate the direction of the flux rope.

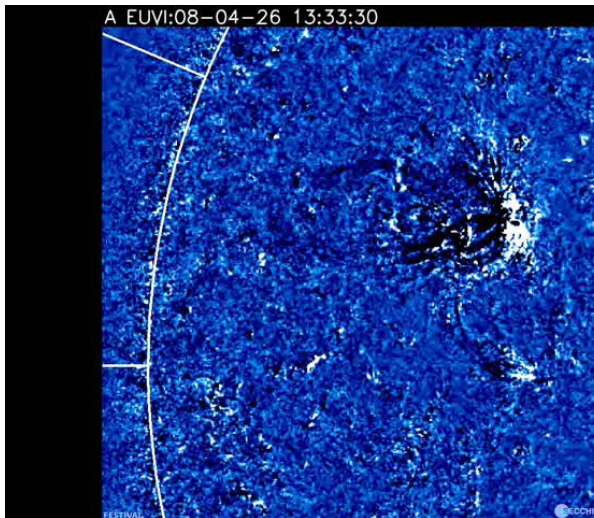
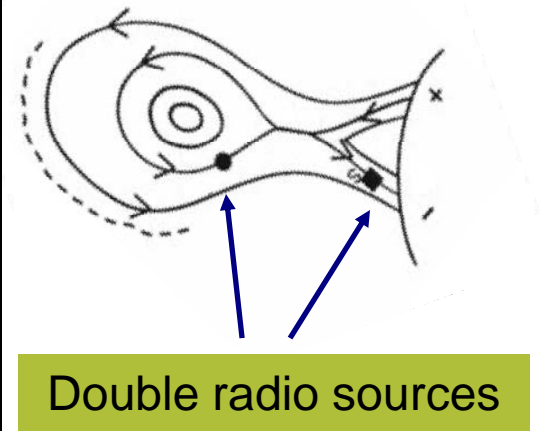
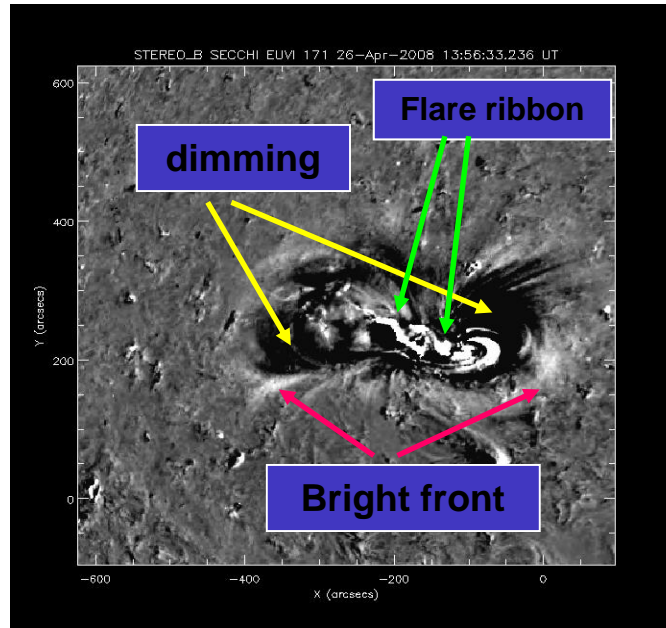
327 MHz 13:52:26

26/04/2008 Halpha 14:54:36UT MDI 14:24:00UT

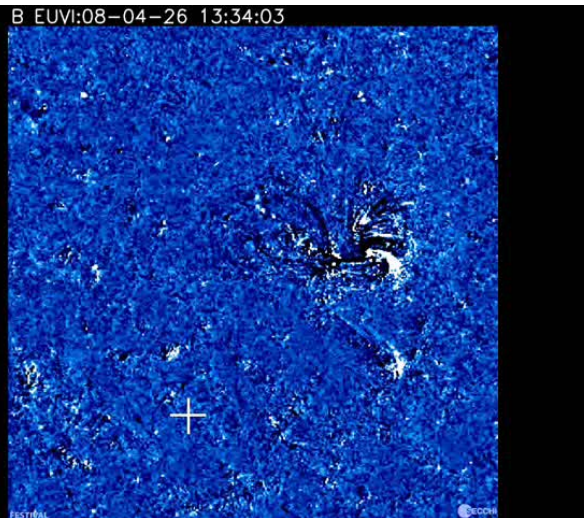
\* HXR source 1353-1354  
Red -- HalpAD



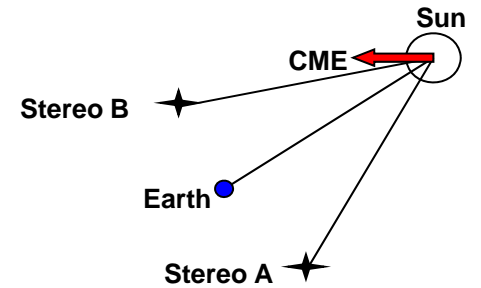
STEREO\_B SECCHI EUVI 171 26-Apr-2008 13:56:33.236 UT



Stereo A

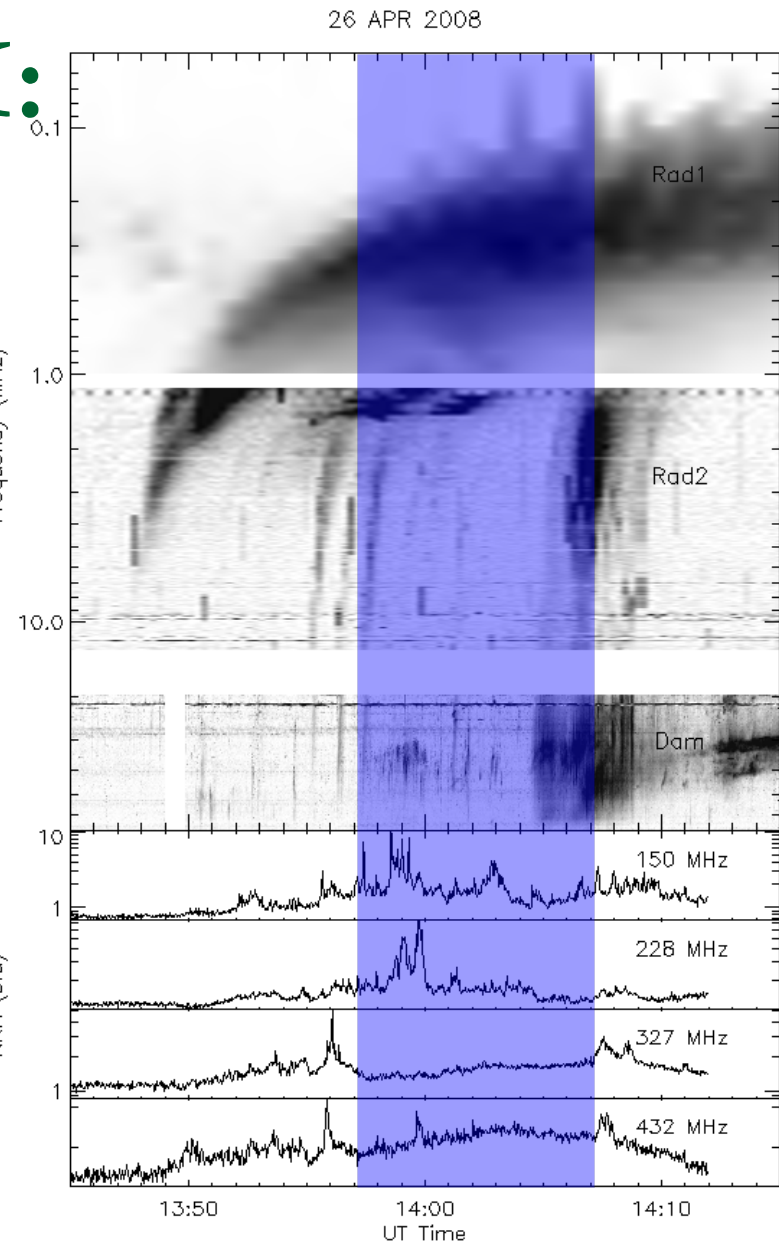
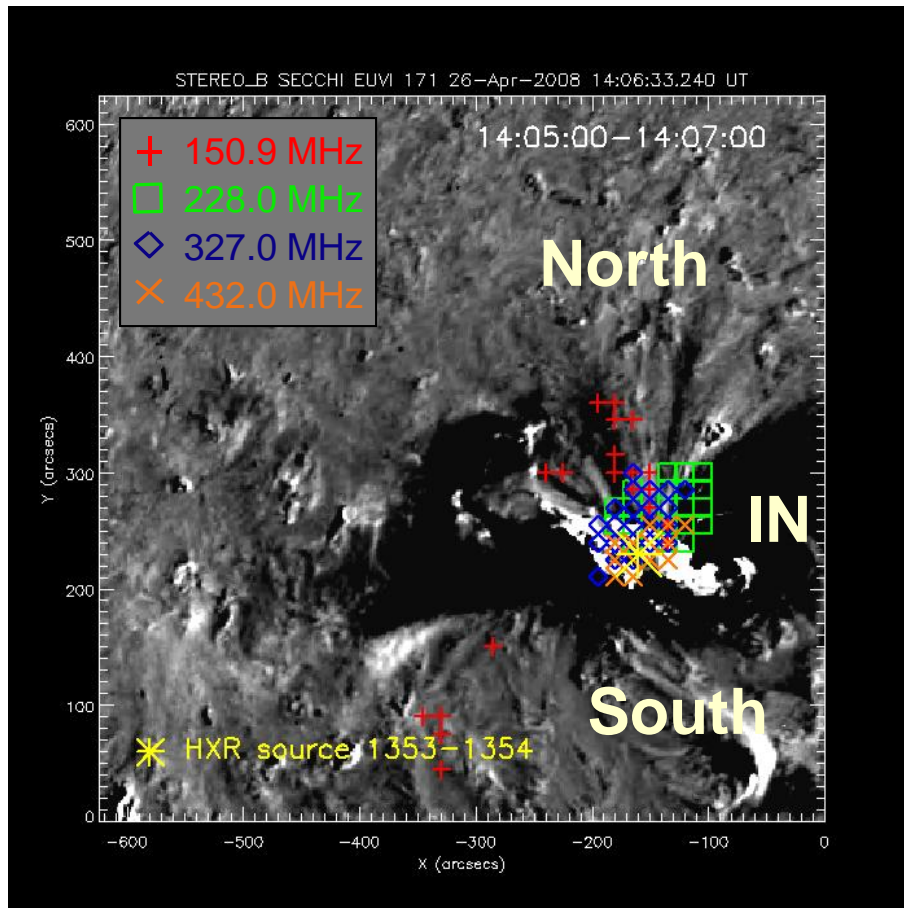


Stereo B



# Eruptive phase II:

■ 13:57:00-14:07:00





# Summary:

- Initiation I (13:47-13:50)

The lateral source: traces reconnection with open field line => type III burst  
**=> reduction of the downward magnetic tension**

- Initiation II (13:50-13:51)

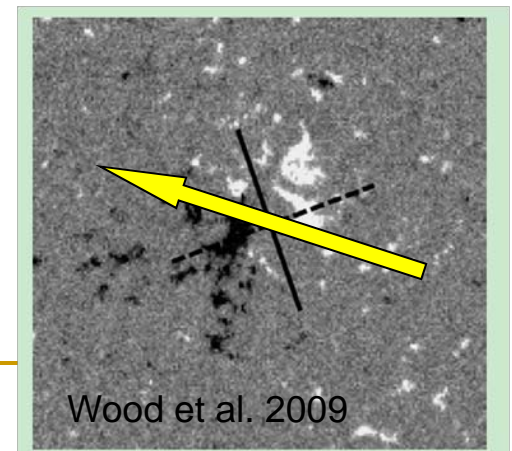
The IN source: new reconnection of sheared loops occurred over the PIL  
**=> build up of the flux rope**

- Eruptive phase I (13:51-13:57)

The IN source (over PIL): energetic electrons in the flare-loop top  
The EX source (over dimming): energetic electrons at the flux-rope bottom  
**gives the direction of the eruptive flux rope**

- Eruptive phase II (13:57-14:07)

The south and north sources: preceding the EUV bright front  
**trace the expansion of the flux rope**



Wood et al. 2009